



The Tributary



A Newsletter of the Western Division, American Fisheries Society

Volume 28, No. 1, January 2004

“Native Fish Management: Policies, Politics and Practicalities”

Salt Lake City Sparkles!

The Western Division of the American Fisheries Society's Annual Meeting is being hosted by the Bonneville and Colorado/Wyoming Chapters and the Division is meeting in conjunction with the Whirling Disease Foundation. This unique cooperation is leading to a very ambitious agenda for this meeting. There will be plenty of opportunities to attend Continuing Education classes, network with other professionals and share your latest work with your peers throughout the West. The meeting is being held at the Little America Hotel in Salt Lake City starting February 29 through March 4.

The theme for this year's meeting is Native Fishes – Policies, Politics, and Practicalities. Pursuing this theme, there will be a session sponsored by the Western Native Fishes Committee to present papers related to the status of native fishes of the west. The papers from this session will be published and will form the basis for the Committee's future work. There will be 7 or 8 concurrent sessions at this annual meeting. There will be workshops offering to help with professional development such as a free workshop on February 29 on Robert's Rules of Order taught by incoming President-Elect, Joe Margraf. The Utah State Student Subunit is organizing the Continuing Education courses and in return will reap any profits from the

training courses. So, please support the initiative displayed by this active student subunit and sign up for a course!

The Bonneville and Colorado-Wyoming Chapters will have business breakfast meetings on Tuesday March 2 and the Western Division Business meeting will be on March 3 at lunch (FREE).

This meeting will provide a few socials to give you the opportunity to network with other professionals. A welcoming social Sunday evening will kick off the meeting. On Monday evening, after a chance to sample some of Salt Lake City's great restaurants, we will have a film festival coordinated by Roger Wilson. The films will include "Chub Busters", a film about the Strawberry Reservoir rotenone treatment in 1990 and "Big Fish – More of 'Em." If you have a movie you have worked to produce, bring it along! Tuesday will be the Poster Social that is being sponsored by the Whirling Disease Foundation. That evening will also feature an acoustic music concert by Slipstream. They play a mix of country, originals, and older pop and jazz tunes. Wednesday evening will be our banquet and raffle at the Union Station Depot at the Gateway Complex. This will be within walking distance although we will provide a shuttle. Phaedra Budy, Tracy Stephens and Dan Brauch are lining up an incredible array of items to bid on. For those of you bringing

spouses, we have made guest fees reasonable and we encourage them to attend the socials and banquet.

This may be the Western Division's earliest annual meeting. Not coincidentally, this is Salt Lake City's best winter sports season. We have a number of excellent trips planned before, during and after the meeting for attendees and their significant others thanks to the efforts of Matthew Anderson and Mike Slater. See

(continued on page 6)

In This Issue

<u>Topic</u>	<u>Page</u>
2004 Annual Meeting	
Overview	1
Accommodations	9
Continuing Education	8
Guidelines for Speakers	7
Registration Form	12
Schedule-at-a-Glance	6
Student Information	9
Socials & Special Events	4
Tours & Activities Schedule	4-5
Trip Registration Form	5
2004 Chapter Meetings	4
Bull Trout Committee	4
Candidate Profiles - VOTE!	10-11
Committees	3
Officers & Representatives	3
President's Message	2
New Release from AFS	2

The Tributary is distributed to 3,742 WDAFS members and exists as a forum to present fisheries-related information. The editor is Mary Whalen. If you have information you would like to have included in The Tributary, please contact us at;

MARY WHALEN
Tributary Editor - WDAFS
U.S. Geological Survey
1011 E. Tudor Rd., MS 701
Anchorage, AK 99503
Ph. (907)786-3496, FAX (907)786-3636
E-mail: mary_whalen@usgs.gov

WESTERN DIVISION, AMERICAN FISHERIES SOCIETY

c/o Mary Whalen, Editor
USGS - Alaska Science Center
1011 E. Tudor Rd., MS 701
Anchorage, Alaska 99503

Non-Profit Org.
U.S. POSTAGE
PAID
Permit No. 33
Corvallis, Oregon

Submissions for the next issue of The Tributary are due around May 1, 2004.

President's Message - A quick message from the Prez....

Well, it's late January... have you sent in your registration for the upcoming Western Division's Annual Meeting in Salt Lake City yet? I hope you have – if not, you only have until January 30th for early registration. The Program and Local Arrangement



Committee's have put together a great meeting that no one will want to miss. Talks, networking, and posters await you concerning subjects such as native fishes, grazing, water policy, whirling disease, science and public policy, instream flows, aquaculture, and watershed planning, to name a few. Along with fun socials to

interact with your friends and colleagues and student participation for our future biologists and fish administrators, it sure sounds like something for everyone. Still not convinced of the value of this meeting... or any other AFS meeting for that matter? How about your fisheries colleagues that do not belong to the AFS or have not participated in these types of events in a long, long time... what's up with them? I do hope to see you in March in Salt Lake City, but let me tell you why I've decided that being a part of the American Fisheries Society has value for me, my profession, and my family.

It's actually quite simple... us fish heads need to stick together and learn from each other. It's a tough world out there and we're the "fish experts" on lots of subjects that the public is currently interested in and have valid questions about. Have you read the latest in our newspapers? "Farmed Salmon Assailed – Study Warns of Cancer Risk" or "Whirling Disease – Should You Be Worried About Your Next Trout Fishing Trip." There always seems to be something in the print or TV media about water quality, global warming, pollution, strange fish introductions... yikes, it could actually spin your head if you tried to decipher everything. Many of these questions are then being asked of us as fisheries professionals. Do you have all the answers for you, your family, or the public? Nope, me neither. But it is comforting for me to know that someone, somewhere within the AFS has some good, sound data to answer these questions; it's called networking. My own little world revolves around fishing in Arizona, but by being active in the AFS, I find myself able to surround myself with you wonderful folks who really care about the resource, people and the future. I venture to guess that most professions are much more cutthroat (pun intended) than ours. Being an AFS member does not make me a fisheries expert, but non-involvement sure would make me boring, unwilling to grow, and stuck in my own little area of expertise.

I continue to renew my membership and go to annual meetings because of the future, not the present. Budget cuts, no travel monies, time constraints, family commitments, professional indignation... all examples of excuses. Throw 'em out and get involved in

your profession. Although you folks reading this are probably very active in the Western Division or your local AFS chapter, you may ask if a close colleague of yours – who may be quite a curmudgeon – might want to expand their realm of influence or improve their institutional fish knowledge. Give them this message and/or bring them to a meeting. And always remember – professional society involvement can assist you in becoming an inclusive human, as opposed to an exclusive scientist. Hopefully, like me, you strive to be inclusive.

Thanx....Tom McMahon, Prez

2004 Western Division Chapter Meetings

The following are dates, locations and contact information for Chapter Meetings in 2004. Chapter web sites are in italics.

Alaska

15-18 November, Sitka, AK
Molly Ahlgren, (907) 747-5255
<http://www.fisheries.org/afs-ak/>

Arizona - New Mexico

5-7 February, Safford, AZ
Doug Duncan, (520) 670-4860
<http://www.fisheries.org/aznm/>

Bonneville

29 February - 4 March, Salt Lake City, UT
Eric Wagner, (435) 752-1066
<http://www.fisheries.org/bonneville/>

California - Nevada

21-24 April, Redding, CA,
Tina Swanson, (530) 756-9021
<http://www.afs-calneva.org/>

Colorado - Wyoming

29 February - 4 March, Salt Lake City, UT
Eric Wagner, (435) 752-1066
<http://www.fisheries.org/co-wy/>

Hawaii

2004 Meeting TBD, HI
Paul Dalzell, Paul.Dalzell@noaa.gov
<http://home.hawaii.rr.com/ikehara/afshi/index.html>

Humboldt

21-24 April, Redding, CA,
Dana R. McCanne, (707) 825-7350 ext. 3
<http://www.northcoast.com/~humbafsf/>

Idaho

14 - 16 February, Moscow, ID
Vaughn L. Paragamian, vparagam@idfg.state.id.us
<http://www.fisheries.org/idaho/>

Montana

4-6 February, Whitefish, MT,
Clint Muhlfeld, (406) 751-4542
<http://www.fisheries.org/AFSmontana/>

North Pacific International

1-3 November, Stevenson, WA
John Monahan, (509) 457-7112
<http://www.fisheries.org/npic/>

Oregon

18-20 February, Sunriver, OR,
Doug Olson, (360) 696-7605
<http://oregonstate.edu/groups/orafs/index.html>

NEW Release from AFS:

Inland Fishes of Washington, Second Edition

Richard S. Wydoski and Richard R. Whitney
360 pages, hardcover, 113 color plates
Published by American Fisheries Society in association with University of Washington Press
Publication date: November 2003
Stock #637.06C; ISBN 0-295-98338-8
List price: \$55
AFS Member price: \$45

Summary:

This new, updated, and greatly expanded edition of *Inland Fishes of Washington* (first published in 1979) describes all the known native and introduced fishes found in freshwater habitats of Washington State, including most of the fishes of Oregon, Idaho, and British Columbia. The authors have created a valuable reference for the general public, biologists, teachers, students, and environmentalists.

An overview of Washington's topography and natural provinces clarifies the influence of geographical, historical, economic, and political forces on the existence of freshwater fishes today. This wide-ranging study gives balanced coverage to nearly everything that is known about the appearance, distribution, growth, reproduction, consumption, and survival of these fish. Salmon, perhaps the most prized fish in the Northwest, are placed within the context of the many other mutually supporting species that together make up the ecological network that sustains them all. Forces impacting fish populations—the presence of non-native and introduced fish, historical and contemporary urban development, and the management of water resources—are also discussed.

The book provides instruction on the basic methods of fish identification, with keys and illustrations that bring together the traits and forms most useful in distinguishing species and subspecies. The keys follow a simple arrangement that progressively illustrates and discusses traits distinctive to each fish.

The valuable information presented here benefits from the authors' many years of firsthand experience in the field, their years of study and research, and their awareness of and access to the best investigative work being done today by biologists and researchers across the country.

List price: \$55.00
AFS Member price: \$45.00
Stock #637.06C, hardcover
ISBN 0-295-98338-8

To order:

Online: Go to the AFS Online Bookstore at: <http://64.224.98.53/cgi-bin/hazel-cgi/hazel.cgi>
Phone or Fax: AFS Book Orders at (678) 366-1411, or Fax (770) 442-9742.
Email: afspubs@pbd.com

WDAFS Committees

Archivist Venice Beske 307-777-7982 vbeske@state.wy.us	AFS Certification Appeals Committee Tom McMahon 602-789-3268 tmcMahon@gf.state.az.us	Awards Committee Don MacDonald 250-729-9623 sff@island.net	Bull Trout Committee Shelley Spalding 360-753-7762 shelley_spalding@fws.gov
Cutthroat Trout Conservation Documentary Committee Ken McDonald, Co-Chair kmcdonald@state.mt.us Bruce May, Co-Chair 406-587-6707 bmay01@fs.fed.us	Electronic Communications and Newsletter Committees Mary Whalen 907-786-3496 mary_whelen@usgs.gov	Environmental Concerns Committee Jeff Fisher, Co-Chair 360-352-3202 jfisher@entrix.com Harold Tyus, Co-Chair tyush@spot.colorado.edu	Eugene Maughan Scholarship Committee Robert Gresswell 541-750-7410 Robert_Gresswell@usgs.gov
Grants Funding and Investment Committee Bill Bradshaw 307-672-7418 Bill.Bradshaw@wgf.state.wy.us Investment Sub-Committee Henry Booke 541-745-9091 hnbooke@juno.com	Hutton Committee Casey L. Harthorn, Co-Chair 505-522-9796 CHarthorn@state.nm.us Cindy Williams, Co-Chair 406-247-7719 cwilliams@gp.usbr.gov	Policy Review Committee Jeff Barrett, Co-Chair 707-764-4408 barrett@scopac.com Scott Haskell, Co-Chair 612-625-0280 haske003@umn.edu	Annual Meeting General Chair Lynn Starnes 505-248-6620 Lynn_Starnes@fws.gov Local Arrangements Committee Eric Wagner 435-752-1066 ext. 22 ewagner@sisna.com Program Committee Dave Zafft 307-745-5180 david.zafft@wgf.state.wy.us
Membership Committee Joe Margraf 907-474-7661 ffjfm1@uaf.edu	Nominating Committee Don MacDonald 250-729-9623 sff@island.net	Sustainable Fisheries Committee Michael F. McGowan 415-338-3514 mcgowan@sfsu.edu	
Riparian and Watersheds Committee Dave Zafft 307-745-5180 david.zafft@wgf.state.wy.us Riparian Challenge Sub-Committee Hilda Sexauer 307-367-2147 ext. 26	Time and Place Committee Dave Lentz 916-358-2831 Dlentz@dfg.ca.gov	Western Native Fishes Committee Lynn Starnes - Co-Chair 505-248-6620 Lynn_Starnes@fws.gov Jim Tilmant - Co-Chair 970-225-3547 jim_tilmant@nps.gov	

WDAFS Officers and Representatives

President Thomas R McMahon Urban Fishing Program Specialist 2221 W Greenway Rd. Phoenix, AZ 85023-4399 Phone: (602) 789-3268 Fax: (602) 789-3265 Cell: (602) 568-1406 tmcMahon@gf.state.az.us	President Elect Lynn Starnes US Fish and Wildlife Service P.O. Box 308 Albuquerque, NM 87103 Phone: (505) 248-6865 Fax: (505) 248-6845 lynn_starnes@mail.fws.gov	Vice President F. Joseph Margraf Alaska Cooperative Fish and Wildlife Research Unit University of Alaska Fairbanks 210 Irving I Bldg, P.O. Box 757020 Fairbanks, AK 99775-7020 Phone: (907) 474-7661 Fax: (907) 474-6716 ffjfm1@uaf.edu	Secretary Treasurer Monica Hiner Yurok Tribal Fisheries Program 15900 Highway 101 North Klamath, CA 95548 Phone (707) 482-2841, ext. 234 Fax (707) 482-0384 monicah@harborside.com
Past President Don MacDonald MacDonald Environmental Services and the Sustainable Fisheries Foundation #24 - 4800 Island Highway North Nanaimo, BC V9T 1W6 Canada Phone (250) 729-9623 Fax (250) 729-9628 sff@island.net	Nominating Representative Kathryn Boyer Dept. Fish and Wildlife 104 Nash Hall, Oregon State University Corvallis, OR 97331-3803 Phone (541)737-1972 Fax (541) 737-3590 kathryn_staley@orst.edu	 <p>Leon Springs pupfish photo by Lynn Starnes</p>	



2003-2004 EXCOM Members (from left to right): Monica Hiner (secretary/treasurer), Joe Margraf (Vice President), Lynn Starnes (President Elect), Tom McMahon (President) and Don MacDonald (Past President).

Bull Trout Committee Assists With On-Going Project

Bull trout have been studied extensively using radio telemetry, and results from case studies across the range of bull trout are available from many locations and populations. The WD AFS Bull Trout Committee is assisting and endorsing an on-going project whose goal is to synthesize the existing data collected on bull trout using radio telemetry. Dr. Matthew Dare, Boise State University, is leading the project in collaboration with Dr. Jason Dunham, USFS Rocky



Surgery to implant radio tags in bull trout *Salvelinus confluentus*

Mountain Research Station. A synthesis of these case studies and data will provide a more comprehensive understanding of the behavior and biology of bull trout. A number of workshops and meetings have been held to discuss the needs for this synthesis and there is strong support for this effort. Biologists from a number of agencies have indicated that a synthesis of the existing bull trout telemetry studies will be a valuable addition to the recovery planning process as well as enabling future research on this animal to be directed at any knowledge gaps.

If you are interested in this project, we encourage you to visit the project website at www.northwestbulltrout.com

to learn more about the synthesis project including specific objectives and biological and management



Radio tagged bull trout *Salvelinus confluentus*

questions. Collecting and analyzing these bull trout radio telemetry studies and data from across the range of bull trout is a critical task and provides an important opportunity to further inform researchers, managers, and biologists about the habits of this fish.

Shelley Spalding
4WDAFS Bull Trout Committee Chair

AFS Western Division Meeting - Salt Lake City

Socials/ Special Events

Welcoming Social

Sunday evening, Feb. 29, from 6:00 to 9:00 pm, there will be an opportunity to mingle with old friends and make new acquaintances. The pool terrace on the second floor provides a great place to socialize. Drink tickets will be provided with your registration packet. Some hors d'oeuvres will also be provided.

Poster Social

Tuesday evening March 2, from 6:00 to 8:00 pm, the Whirling Disease Foundation is sponsoring a social in which poster presenters will be on hand to discuss their research. Drink tickets will be provided with your registration packet and hors d'oeuvres will also be provided.

Slipstream Concert and Jam

Tuesday evening March 2, from 8:00 to 9:00 pm, the band *Slipstream* will perform in a free concert. After the concert, a jam will follow in which all acoustic musicians are welcome to join in regardless of skill level. The band is composed of a variety of fisheries professionals: Matthew Andersen (guitar, bass, vocal), Chris Andersen (piano, vocal), Bill Bradshaw (mandolin), Eric Wagner (guitar, harmonica, vocal, violin). The songs range from country western to folk and old-time, with a few acoustic originals thrown in for good measure.

Film Festival

Monday evening March 2, starting at 8:30 pm, will be an opportunity to view some bootleg fisheries films. These include *Chub Busters*, a film unceremoniously documenting the largest rotenone treatment in history at Strawberry Reservoir, UT, and *Big Fish More of 'Em*. If you have a film to share at the festival contact our film coordinator, Roger Wilson, at 435 7649-9368.

Banquet and Raffle

Wednesday evening March 3, from 6:00 to 10:30 pm, the banquet and raffle will be held offsite at the Union Pacific Depot (on the west side of the 400 West and South Temple intersection). This has been recently renovated as part of the Gateway shopping complex development. There will be a BBQ dinner and great prizes to try for. Roger Schneidervin will be the raffle host. If you'd like to donate raffle items, contact Phaedra Budy at 435 797-7564.

Draft Local Tours and Activities Schedule

Brief Summary and Estimated Costs

All times Mountain, all events subject to change

Questions? Contact Matthew Andersen (801) 538-4756 or matthewandersen@utah.gov. More complete descriptions of activities can be sent by e-mail.

During the AFS Western Division meetings another option for extracurricular activities could

include fishing the legendary Provo River. For more information members could go to a couple of web sites: wr.yfisher.com, utah.yfishing.com, troutbum2.com, and parkcitytroutfitters.com. These are just a few of the many outfitters who can supply a lot of good information to guest about fishing some local waters near Salt Lake, including the Provo River.

Saturday 28 February

7:30 am – 5:30 pm: Alpine skiing (on your own, no minimum people). Transportation and lift tickets \$48 - \$89, equipment rentals available, more information at: www.skiutah.com

9 am – 2 pm: Classic Nordic/cross-country skiing and snowshoeing in Wasatch-Cache National Forest (escorted, 10 people maximum). Transportation and forest pass \$10, equipment rentals available \$15

9 am – 4 pm: Ski Jumping World Cup at Utah Olympic Park (escorted, 20 people minimum). Transportation and event ticket \$65

Shopping in Salt Lake City, Clark Planetarium (exhibits free) (on your own).

8 pm: Utah Symphony Performance at Abravanel Hall (on your own, no minimum people). Transportation free, Tickets \$16-40.

Midnight: Music and Laser show at Clark Planetarium (on your own). Tickets \$10

Sunday 29 February

7:30 am – 5:30 pm: Alpine skiing (on your own, no minimum people). Transportation and lift tickets \$48 - \$89, equipment rentals available, more information at: www.skiutah.com

9 am – 4 pm: Nordic/cross-country skiing and snowshoeing at White Pine Touring, Park City (escorted, 10 people maximum). Transportation and track pass \$24, equipment rentals \$12 - 15

9 am – 4 pm: Ski Jumping World Cup at Utah Olympic Park (escorted, 20 people minimum). Transportation and event ticket \$65

Shopping in Salt Lake City, Clark Planetarium (exhibits free) (on your own).

6 pm – 9 pm: Welcoming Social at Little America Hotel

Monday 1 March

Plenary and Symposia sessions; see meeting schedule

7:30 am – 5:30 pm: Alpine skiing (on your own, no minimum people). Transportation and lift tickets \$48 - \$89, equipment rentals available, more information at: www.skiutah.com

Shopping in Salt Lake City, Clark Planetarium (exhibits free) (on your own).

12 Noon to 4 pm: Ice Skating in Park City (escorted, 30 people minimum). Transportation and skate rental \$25

7 pm: NBA Basketball (on your own). Detroit Pistons at Utah Jazz at Delta Center. Transportation free, tickets \$30-110

(continued on page 5)

AFS Western Division Meeting, 28 February – 6 March 2004, Salt Lake City

Draft Local Tours and Activities Schedule (continued)

Tuesday 2 March

Symposia sessions; see meeting schedule

7:30 am – 5:30 pm: Alpine skiing (on your own, no minimum people). Transportation and lift tickets \$48 - \$89, equipment rentals available, more information at: www.skiutah.com

9 am – 4:30 pm: Shopping in Park City (escorted, 30 people minimum). Transportation and tour \$45

1 pm – 5:30 pm: Tubing at Snowbird (escorted, 30 people minimum). Transportation and equipment \$25

Shopping in Salt Lake City, Clark Planetarium (exhibits free) (on your own).

6 pm: Poster sessions and Whirling Disease social

8 pm: Musical entertainment

Wednesday 3 March

Symposia sessions; see meeting schedule

7:30 am – 5:30 pm: Alpine skiing (on your own, no minimum people). Transportation and lift tickets \$48 - \$89, equipment rentals available, more information at: www.skiutah.com

Shopping in Salt Lake City, Clark Planetarium (exhibits free) (on your own).

9 am – 4:30 pm: Shopping in Park City (escorted, 30 people minimum). Transportation and tour \$45

6 pm: Social

7 pm: Western Division banquet

7 pm: Mormon Tabernacle Choir Rehearsal (own your own). Free

Thursday 4 March

Continuing Education Workshops; see meeting schedule

7:30 am – 5:30 pm: Alpine skiing (on your own, no minimum people). Transportation and lift tickets \$48 - \$89, equipment rentals available, more information at: www.skiutah.com

8:30 am – 1 pm: Three snow races. Snowshoeing, classical Nordic/cross-country ski, and free-style (skating) Nordic ski races at White Pine touring (escorted, 20 people minimum total for all three races). Transportation and track rental \$30, equipment rental available \$12 - 15

Shopping in Salt Lake City, Clark Planetarium (exhibits free) (on your own).

9 am – 4:30 pm: Shopping in Park City (escorted, 30 people minimum). Transportation and tour \$45

8:30 am – 4:30 pm: Dogsledding near Midway (escorted, 4 people minimum, 16 people maximum). Transportation and dogsledding \$350 per person

8 am – 12 noon: Park City Snowmobiling (escorted, 30 people minimum) Transportation and equipment \$160 per person (two-hour ride)

Friday 5 March

7:30 am – 5:30 pm: Alpine skiing (on your own, no minimum people). Transportation and lift tickets \$48 - \$89, equipment rentals available, more information at: www.skiutah.com

9 am – 4 pm: Nordic/cross-country skiing and tubing at Soldier Hollow, Midway (escorted, 20 people maximum). Transportation and track pass \$25, equipment rentals available \$15

Shopping in Salt Lake City, Clark Planetarium (exhibits free) (on your own).

9 am – 4:30 pm: Shopping in Park City (escorted, 30 people minimum). Transportation and tour \$45

8:30 am – 4:30 pm: Dogsledding near Midway (escorted, 4 people minimum, 16 people maximum). Transportation and dogsledding \$350 per person

8 am – 12 noon: Park City Snowmobiling (escorted, 30 people minimum) Transportation and equipment \$160 per person (two-hour ride)

Midnight: Music and Laser show at Clark Planetarium. Tickets \$10

Saturday 6 March

7:30 am – 5:30 pm: Alpine skiing (on your own, no minimum people). Transportation and lift tickets \$48 - \$89, equipment rentals available, more information at: www.skiutah.com

8 am – 6 pm: Back-country skiing (escorted). Transportation \$22

9 am – 4 pm: Nordic/cross-country skiing and snowshoeing at White Pine Touring, Park City (escorted, 10 people maximum). Transportation and track pass \$24, equipment rentals \$12- 15

9 am – 4:30 pm: Shopping in Park City (escorted, 30 people minimum). Transportation and tour \$45

8:30 am – 4:30 pm: Dogsledding near Midway (escorted, 4 people minimum, 16 people maximum). Transportation and dogsledding \$350 per person

8 am – 12 noon: Park City Snowmobiling (escorted, 30 people minimum) Transportation and equipment \$160 per person (two-hour ride)

Midnight: Music and Laser show at Clark Planetarium. Tickets \$10

Trip Registration Form Western Division AFS Meeting 2004

Name: _____

Trip (see pg.10 for description)	Day of trip	Registration Cost Per person	Fill in cost below for each trip you want:
Nordic/X-C skiing or snowshoeing (max. 10 people) Soldier Hollow (20 max)	Sat. Feb. 28	\$10 (transp.+ pass; does not include \$15 equip. rental)	_____
	Sun. Feb. 29	\$24 (transp.+ pass; does not include \$15 equip. rental)	_____
	Fri. Mar 5	\$25 (transp.+ pass; does not include \$15 equip. rental)	_____
	Sat. Mar 6	\$24 (transp.+ pass; does not include \$15 equip. rental)	_____
Ice skating in Park City	Mon. Mar. 1	\$25 (transp. + skate rental)	_____
Shopping in Park City (30 people minimum)	Tue. Mar. 2	\$45 (transp. + tour)	_____
	Wed. Mar 3	\$45	_____
Dog sledding (4 people minimum/16 max.)	Thu. Mar 4	\$350	_____
	Fri. Mar 5		_____
	Sat. Mar 6		_____
X-C/snowshoe races (20 minimum)	Thu. Mar 4	\$30 (transp. + track rental; does not include \$15 equip. rental)	_____

Please send this form to:

Matthew Anderson
Utah Division of Wildlife Research
1594 West North Temple, Suite 2110
Salt Lake City, UT 84116

2004 Western Division Annual Meeting in Salt Lake City (continued)

wdafs.org for more details. Rather than a “run” this year, we decided to make our “venue” match the athletic event. There will be a cross-country ski race on Thursday morning near Park City. Please sign up if you are interested in that event. If you arrive early or stay late to enjoy Utah’s champagne powder, stay at the Little America and get the conference rate while the Division accrues your additional room nights! Remember all the Olympic coverage in 2002? Well, many of those venues are still available for us outdoor folks to use. For example, at the Utah Olympic Park (435-658-4200) you can hop a bobsled with a driver and hit the curves at 80 mph and 4 Gs. Or, sign up for a program of the Park’s ski jumps. Likewise, at the Olympic Oval in Salt Lake Valley (801-963-7109) you can try setting your own skating records with the help of a coach and rental skates.

Whatever your pleasure before, during and after the Western Division of the American Fisheries Society’s annual meeting with the Whirling Disease Foundation, just look on wdafs.org. Come and enjoy all that Salt Lake City has to

Meeting Registration

**Early Registration Deadline is
January 30, 2004!**

A meeting registration form is included in this issue as well as information regarding Online registration. Check the annual meeting website for specific information prior to heading to Salt Lake City (www.wdafs.org/meet/2004/meet_2004.htm). Everything you will need to know about the meeting will be available at this site. So, bookmark it and visit it if you have any questions about the final meeting agenda, continuing education workshops, registration, accommodations, tours and activities, paper presentations, or anything else related to the meeting.

Four concurrent, full-day continuing education courses are offered on Thursday to close out the meeting. All proceeds from these courses will go to support the Utah State Student Subunit, so please plan to stick around and take advantage of one of the great learning opportunities that they are organizing.

Everything is included in the meeting with registration fee, with the exception of the Chapter Business Breakfasts (\$5) and Continuing Education workshops (see registration form on page 12). Specific times are subject to change.

Tentative Salt Lake City Annual Meeting Program-at-a-Glance

Schedule subject change. See website for up to date schedule
All activities are at the Little America Hotel unless noted differently.

Event Coordination

Meeting Registration	Uintah Room, 2 nd oor
AFS Business Office	Opens Sunday, February 29 at 12:00pm, Open daily
Audio/Visual Arrangements Office	Wasatch Room, 2 nd oor, Open daily
Trade Show and Poster Session	Sawtooth Room, 2 nd oor
	Opens Sunday, February 29 at 3:00pm, Open daily
	Ballroom B and Grand Foyer, 1 st oor
	Set-up Sunday 4:00-11:00pm, Monday 7:00am-12:00pm
	Open daily
	Teardown Wednesday 3:30-11:00pm
Raffle Display and Ticket Sales	Sinclair Room, 1 st oor, Open daily, Times TBD

Sunday, February 29, 2004

9:00am-1:45pm	WDAFS Excom Luncheon	Flagstaff Room, 2 nd oor
2:00-5:00pm	Parliamentary Procedures Workshop	Sun Valley Room, 2 nd oor
6:00-9:00pm	Welcoming Social	Pool Terrace, 2 nd oor

Monday, March 1, 2004

8:30am-12:00pm	Plenary Session	Imperial A&B, Grand America
12:00-1:30pm	Lunch	On your own
1:30-5:05pm	Concurrent Symposia Sessions	Little America 1 st and 2 nd oors
8:30pm	Bootleg Film Festival	Location TBD
7:00pm	Student Social	Presidential Suite

Tuesday, March 2, 2004

8:00-11:10am, 1:50-5:05pm	Whirling Disease Symposium Concurrent Symposia Sessions	Savoy Room, Grand America Little America, 1 st and 2 nd oors
11:40am-1:40pm	Western Division Business Luncheon	Grand Salon, Grand America
6:00-8:00pm	Poster Session Social	Ballroom B and Grand Foyer, 1 st oor
8:00pm	Slipstream Concert, Open Jam Session	Location TBD

Wednesday, March 3, 2004

7:00-9:00am	Bonneville Chapter Business Breakfast CO/WY Chapter Business Breakfast Poster and Trade Show Visitation	Audubon Room, 3 rd oor, Grand America Arizona Room, 1 st oor Ballroom B and Grand Foyer, 1 st oor
9:05-12:15pm, 1:45-4:55pm	Whirling Disease Symposium Concurrent Symposia Sessions	Savoy Room, Grand America Little America, 1 st and 2 nd oors
12:15-1:45pm	Lunch	On your own
6:00-10:30pm	West Div Banquet, Raffle and Auction	Union Pacific Depot

Thursday, March 4, 2004

8:00-12:00, 1:00-5:00	Continuing Education Workshops	2 nd oor
12:00-1:00pm	Lunch	On your own

Symposia Sessions

- Aquaculture
- Whirling Disease
- Contributed Papers
- Western Native Fishes
- Coastal Cutthroat Trout
- Threats to Western Waters
- Food Webs and Fish Carrying Capacity
- Impacts of Fire Management on Fisheries
- Reservoir Sampling and Management Strategies
- Research and Management of Western Native Inland Trout
- Management of Resident Fish in the Columbia River Basin
- Supplementation: Measuring Effects and Predicting Outcomes
- Stream Habitat Restoration: Approaches, Cases and Techniques
- Watershed Planning: Approaches, Challenges, and Strategies for Success
- Science in the Public Arena: The How and Why of Scientific Decision-Making
- Instream Flows: Scientific Applications, Legal Considerations and Public Involvement
- Lessons for the Design of Future Salmon Habitat Restoration and Monitoring Programs
- Large-Scale Surveys: Providing the Scientific Foundation for Fish and Aquatic Ecosystem Management

There will be about 8 concurrent sessions each day, in addition to the Whirling Disease Symposium. Visit the Western Division annual meeting website for details regarding each of the symposia.

Guidelines for Speakers

1. Presentations throughout the conference are scheduled in 20-minute blocks. The speaker introduction, presentation and question and answer period must be completed during the 20-minute block. It is very important that speakers stay on time. We suggest that you allow about one minute for your introduction, 15-16 minutes for your talk and 3-4 minutes for questions. The moderator will notify you when there is 5 minutes left in your 20-minute block, 3 minutes and 1 minute. Presentations will not be allowed to exceed 20 minutes.
2. Rehearse your talk before the meeting to be sure you do not exceed the allotted time.
3. A general outline for talks should be: Introduction, Objectives, Methods, Results, Conclusions/Implications.
4. Objectives should be clearly stated. Conclusions should relate back to objectives.
5. Avoid unnecessary detail in methods unless the methodology is the central topic of your talk.

Concentrate on the results and conclusions.

6. An excellent article for speakers is "Strategy and checklist of effective scientific talks" (Ecol. Soc. Am. Bull. 72: 8-12, 1991).

Guidelines for Visual Aids:

1. The only acceptable formats for visual aids are 2"x2" slides or computer LCD projection using Microsoft PowerPoint or Corel Presentations. Speakers should refer to the specific guidelines for these two media listed below.
2. At the meeting, each session will be supplied with a podium, microphone, laser pointer, remote control, slide projector, laptop computer and LCD projector.
3. Keep the visuals simple. Limit one idea per visual. Text and data visuals should be prepared specifically for your presentation, NOT copied from a manuscript or paper. Figures and tables for publications usually do not make good visuals for talks because they contain too much detail.
4. When working with words, think brevity. Use a maximum of 6 words across and 5 or 6 lines deep on each slide. Use only key phrases to emphasize important points.
5. Tables should be simple with a maximum of 3 columns and 5 rows or vice versa. Illustrate complex ideas with a series of separate visuals.
6. Experiment with different graph and chart options for presenting data, but keep graphic slides simple. Explain the structure of graphs as well as their content.
7. Visuals look best if you use 2-4 different colors. More than four colors will lead to confusion. White and yellow on blue, green or black backgrounds work well. Avoid color combinations of blue, green and red. People who are colorblind may have problems telling these colors apart.
8. Use an easily read font in a large size; 14 bold or larger.

Instructions for Speakers Using Slides:

1. All speakers must check their slides in at the Sawtooth Room (next to meeting Registration in the Uintah Room) on the second floor of the hotel by 8:00 pm on the evening before your talk. We will begin checking in slide presentations at 3:00 pm on Sunday, February 29.
2. Speakers will retain their slides after check-in.
3. A preview room will also be available so speakers can make sure slides are arranged correctly.
4. Bring your slides in a labeled carousel to your

scheduled room at least 15 minutes before your session is scheduled to start so that AV workers can prepare it for projection and you can receive last-minute instructions regarding AV equipment. Use only an 80-slide carousel. Slides may jam in the larger 140-slide carousels.

5. Number your slides in the lower left corner on the side the slide is correctly viewed to naked eye. This will allow them to be rearranged quickly if necessary.

Instructions for Speakers Using LCD Projectors:

1. All speakers using LCD projectors must submit presentations using PowerPoint or Corel Presentations.
2. Speakers are strongly encouraged to submit their presentation to the session moderator at least one week prior to the meeting.
3. All speakers must submit a copy of their PowerPoint or Corel Presentation in the Sawtooth Room (next to meeting Registration in the Uintah Room) on the second floor of the hotel by 8:00 pm on the evening before your talk. We will begin downloading presentations at 3:00 pm on Sunday, February 29. Speakers that previously submitted presentations to session moderators must also bring their presentation and check in to make sure their presentation has been downloaded.
4. Bring your presentations loaded to CD. Zip disks will be accommodated if necessary. Personal laptop computers will not be allowed.
5. Save presentations using your last name followed by first name as the presentation title.
6. Presentations will be downloaded to a provided computer in the Sawtooth Room. You will be asked to preview your presentation to detect and correct problems.
7. We encourage speakers using LCD projectors to bring a back-up of either overheads or slides in case of problems. An overhead projector will be available in case these back-ups are needed.
8. Speakers should arrive in your scheduled room at least 15 minutes before your session begins so you can receive last-minute instructions regarding the LCD projection equipment.

Extended Abstracts and Reports

A CD will be distributed with the copy of bound meeting abstracts. All authors of papers and posters are invited to submit more detailed information to be included on this CD. Contact Rob Gipson (307-733-2383 ext. 226 or rob.gipson@wgf.state.wy.us) as soon as possible if you have an extended abstract, administrative report, or other information that you would like included.

Continuing Education

Continuing Education Opportunities in Salt Lake City

“Point of Order”- Skills for Surviving General Robert’s Rules

Sunday, February 29, 2004. 2:00-5:00 pm. This workshop is free.

Most AFS members have attended Chapter, Division or Society business meetings conducted using Parliamentary Procedure (Robert’s Rules of Order). Although this meeting format might at first appear cumbersome, the application of parliamentary law is the best method yet devised to conduct official business in a minimum amount of time while providing all participants the opportunity to express opinions and accommodating questions and resulting discussion. Robert’s Rules protect the rights of AFS members who join together to accomplish common goals and enable them to debate and take action in a fair manner with the least amount of unproductive controversy. Whether acting as Chair or member, effective participation requires a working knowledge of the Rules. As Constitutional Consultant, Dr. Joe Margraf has served as Parliamentarian at numerous meetings of the American Fisheries Society. Joe will provide a basic understanding of Robert’s Rules that will allow students to participate effectively in meetings that are conducted using Parliamentary Procedure. A mock meeting will be used to demonstrate key points. All members, particularly Division and Chapter Executive Committee members are encouraged to attend.

Dr. Joe Margraf, Past AFS Constitutional Consultant
University of Alaska at Fairbanks

Aquatic Invasive Species Threats to Western Waters

Thursday, March 4, 2004. Full day. Registration is \$35 Students, \$50 Nonstudents.

The course will cover the following topics in the morning session, and Hazard Analysis Critical Control Point planning and techniques during the afternoon session.

- Aquatic Nuisance Species (ANS) Legislation & Funding, Tina Proctor, FWS, Western Regional Panel of the ANS Task Force
- Implementing a State ANS Management Plan, Virgil Moore, Idaho Fish & Game
- Impacts from Green Sunfish & Other Southwestern Invaders, David Hall, University of Arizona, US Forest Service
- Asian Carp, Impact & Spread, Wayne Stancil, FWS, Pierre, SD Field Office
- Whirling Disease as an Invasive Species: Spread & Impact, Billie Kerns, Montana State University

- Establishment of Invasive Species in Hawaii, Anne Brasher, USGS, Aquatic Ecologist
- Response to Threats from Lewis & Clark Anniversary Activities, Steve Phillips, Pacific States Marine Fisheries Commission
- Case History of the New Zealand Mudsail Invasion, David Richards, EcoAnalysis, Montana State University
- Involving Recreation Groups, Bob Wiltshire, Federation of Fly Fishers
- The feasibility of HAACP training for fisheries field workers as a tool to minimize the spread of NZMS among anadromous salmonids rearing habitat in the Columbia River, B.L. Parker, Columbia River Inter-Tribal Fish Commission, 503-238-0667 (W), parb@critfc.org
- Managing Natural Resource Pathways, Steve Sharon, Wyoming Game & Fish
- Open Forum Discussion – How To Improve Response To Invasions

Bob Pitman
Aquatic Nuisance Species Coordinator
US Fish & Wildlife Service

Preparation and Review of Professional Manuscripts

Thursday, March 4, 2004. Full day. Registration is \$35 Students, \$50 Nonstudents.

Manuscript preparation and all the nuances that go with it are entirely overlooked in our academic training and most of us have to learn the hard way and often times avoid this important aspect of communication. The course will not only improve your own manuscript preparation, but will benefit those of you that are in the editorial or review process. This course will provide training on many important areas of manuscript preparation including: why do we publish, what is publishable, how to organize a manuscript, what to include in a manuscript, what does a journal expect of you, how to submit a manuscript, what to expect in the review process, who is your audience and where do you publish, and more.

Dr. Dave Bennett, University of Idaho and Vaughn Paragamian, Idaho Fish and Game Department

Population Viability Analysis

Thursday, March 4, 2004. Full day. Registration is \$35 Students, \$50 Nonstudents. Registrants are encouraged to bring a laptop computer with at least Windows 95 and Excel if possible.

Population Viability Analysis (PVA) is a modeling technique concerned with the probability that a population will exist for a specified length of time or with the minimum size a population can be expected to persist for a specified length of time. In this workshop we will discuss PVA assumptions, data required to build PVA models, the structure of PVA models, the reliability of PVA predictions, and the effect of variance of the estimates on PVA

predictions. All discussions and examples will focus on fish populations and fish issues, and above all, this will be a hands-on workshop. Using Excel, each participant will build several population viability (PV) models, incorporate variance, and perform some introductory simulations (bootstrap) to further explore the effect of variance on PVA predictions. Because we will build PV models from scratch, we will not use any specific PVA software. However, understanding the assumptions and data requirements of PVA, which will be highlighted in the construction of PV models, should aid anyone using commercially available PVA software.

Mary M. Conner
Adjunct Associate Research Professor
Department of Forestry, Range, and Wildlife Sciences
Utah State University

Genetics and Broodstock Management: A Workshop for Non-Geneticists in Aquaculture and Fisheries Management

Thursday, March 4, 2004. Full Day. Registration is \$35 Students, \$50 Nonstudents. There is a minimum enrollment of 30 participants by February 15 or this course will be cancelled.

This workshop is broadly divided into two sections. First, we will discuss factors that can cause genetic changes within populations: mutation, natural selection, migration, and genetic drift. Then we will incorporate these factors into a management plan for broodstocks maintained primarily for fisheries management purposes. This emphasis is adopted because data often indicate the loss of genetic variation from populations is often associated with a reduction in performance attributes such as survival, growth, fecundity, disease resistance, and proper development.

Attendees will receive a course manual. There will be time during the afternoon session for discussion of the above, as well as attempting to answer questions from those attending the workshop.

Dr. Robb Leary
Division of Biological Sciences
Wild Trout and Salmon Genetics Laboratory
The University of Montana

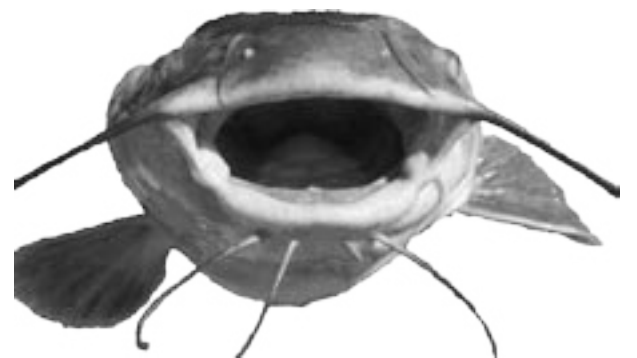


Photo by Steve Leathe

AFS Western Division Meeting, 28 February – 6 March 2004, Salt Lake City

2004 Annual Meeting Accommodations

The meeting will be held at the Little America and Grand America Hotels (www.littleamerica.com), which are right across the street from one another in downtown Salt Lake City. Room rates are \$80/



Little America Hotel, Salt Lake City, Utah

single room and \$120/double room for Garden rooms. Tower rooms are \$129 for a single or \$144 for double occupancy. The special meeting rates will be honored from Wednesday night, February 25 through Saturday night, March 6. Please make your reservations by January 28 by calling 1-800-453-9450 and make sure you mention the American Fisheries Society to get the reduced rate. The early registration deadline for the meeting is January 30. See the registration information in this issue.

Check the annual meeting website for specific information prior to heading to Salt Lake City (www.wdafs.org/meet/2004/meet_2004.htm). Everything you will need to know about the meeting will be available at this site. So, bookmark it and visit it if you have any questions about the final meeting agenda, continuing education workshops, registration, accommodations, tours and activities, paper presentations, or anything else related to the meeting.

Transportation

Southwest Airlines has offered a 10% discount off most fares for air travel to and from the meeting. To qualify, call Southwest Airlines Group and Meetings Reservations at 1-800-453-9450 and reference I.D. code W0234. Reservations sales agents are available 6:00 am to 7:00 pm Monday-Friday, or 7:30 am- 4:30 p.m. Saturday and Sunday, Mountain Standard Time.

The Little America Hotel has a free shuttle from the airport. Call on a courtesy line from the airport (near baggage claim) for pickup.

For those driving to the meeting, parking is free

at hotel. There is a parking lot in the center of the courtyard as well as under the tower building, accessible from the courtyard.

The Trax light rail system goes right by the east side of the hotel for easy access to points downtown or destinations to the south or to the University of Utah. Travel within the downtown area is free. See www.utabus.com for more details and maps.

See Special Events and Socials for more on transportation to special events. See www.parkcitytransportation.com for shuttle services to the Park City area ski resorts.

Student Info

Best Student Paper and Poster

There will be judging of the student papers and student posters for the 2004 Joint Annual Meeting of the Western Division of the American Fisheries Society, the Bonneville and Colorado-Wyoming chapters, and the Whirling Disease Foundation. This year, Anna Miller and Kevin Gelwicks will be coordinating the judging. All senior authors who are bona fide students and are presenting a paper during a symposia from Monday, March 1 (1:00 pm) through Wednesday, March 3rd (5:00 pm) are eligible to win \$100 for Best Student Paper. For Best Student Poster (\$100 prize), the senior author (or a junior author) of the poster must be a student. (We will need from all symposia leaders, a listing of all student presenters, the student's academic institution, and the time of their presentation, as soon as the information is available, but at least two weeks prior to the meeting.)

In addition, anyone who is interested in helping to conduct the student judging, please contact Anna Miller (435-752-1066 ext.12 or 20; annamiller@utah.gov) or Kevin Gelwicks (phone 307-745-5180 ext. 236, kevin.gelwicks@wgf.state.wy.us) as soon as possible. Please send your name, and if you already know, the times or the symposia you are available to judge.

Volunteer Opportunities

Students may volunteer to reduce or waive registration fees. Reimbursement will be one day of free registration for each 2 hours of volunteer work. So for example, you would have to work 8 volunteer hours to waive all registration fees. Volunteer work includes operating AV equipment during sessions, assembling and dismantling poster boards, assisting at the registration desk, lights, and other activities.

Student Lodging

A number of "free" rooms will be available at Little America for student lodging. The Western Division of AFS has secured four rooms which will be made available to students free of charge. Students who are volunteering at the conference will get first priority for the free lodging. The free rooms can accommodate up to four people and room sharing will be required. The free lodging and special rates will only be available on Sunday Feb 28th through Wednesday March 3rd, 2003.

If you are interested in either volunteering or student lodging, contact Mike Mills, a graduate student at BYU. Contact Mike at mdmills@email.byu.edu or 801-422-2163 with the following information:

- (1) Name, email, and phone number (or any other means to contact you)
- (2) How many hours you would like to volunteer, and the times which you can and cannot work.
- (3) If you are interested in student lodging, which days you need a room.

Job Board

A job board will be at the meeting so that attendees can advertise for jobs that are open and job-seekers can check them out.

Ski or Board Before The Meeting! - Discounts Available

While in Salt Lake City take advantage of the "Greatest Snow on Earth." Plan a ski/board trip before or after the meeting. Check at the registration desk for more information including travel arrangements.

Discount passes will be available for some resorts including;

SNOWBIRD \$46 vs \$57 AND PARK CITY \$45 vs \$69

With round trip travel from the hotel for as little as \$7.70.

Questions?

Contact Mike Slater (801) 491-5650 or michaelslater@utah.gov

Raf e

The raf e committee is working on some great prizes for attendees. If you'd like to donate an item for the raf e, contact Phaedra Budy 435 797-7564

WDAFS Candidate Profiles - Vote Today With the Enclosed Ballot!!

Vice President

Mark Brouder

Background - I began my fisheries career by attending Southern Illinois University in 1998, graduating in 1992 with a B.S. degree in Zoology, with an emphasis on fish management. While pursuing my B.S. degree, I spent summers working as a Fish Technician with the DuPage County Forest Preserve District (IL). After earning my B.S. degree, I attended Murray State University (KY) from 1992 to 1994, where I earned my M.S. degree in fisheries science, completing research on the ecology of early life stages of sunfishes in a large southeastern reservoir. After completing my graduate work, I was selected for a Fishery Research Biologist position with the Research Branch of the Arizona Game and Fish Department in 1995, where I spent the next 7 years either researching the effects of Glen Canyon Dam on various aspects of the ecology of endangered humpback chub and other native fishes in the Colorado River and its tributaries, determining the life history and ecology of native roundtail chub in streams within the Verde River Basin, or assessing walleye populations in three large southwestern reservoirs. From 2000 through 2001, in addition to being a Fishery Research Biologist, I was also a Biology Instructor at Paradise Valley Community College (AZ). In 2002, I accepted a position as a Fisheries Project Coordinator with the U.S. Fish and Wildlife Service's, Arizona Fishery Resources Office, primarily working toward the recovery of Arizona's threatened and endangered fishes and their habitats and providing technical fishery assistance to Native American Tribes.

AFS Involvement and Vision - I have been a member of AFS since 1988, with past memberships in the Illinois and Kentucky chapters. Since 1995, I have been a member of the AZ/NM Chapter, where my active involvement at the Chapter, Division, and Parent Society level truly began. At the AZ/NM Chapter level, I have served on several Program Committees, organized and chaired sessions, and coordinated the judging of Best Student Paper Awards at annual meetings. My most significant accomplishment at the Chapter level has been serving on the EXCOM over the past 3 years as President-Elect (2001/2002), President (2002/2003), and currently Past-President (2003/2004). Personal highlights from my tenure as Chapter President were the resurrection of an annual EXCOM meeting, drafting of a Policy/Procedures Manual, the development of a Chapter brochure, sponsorship of and participation in the 1st Annual San Carlos River Clean-up Day, initiating the drafting of several resolutions, personally contacting new fisheries students and newly hired professionals regarding AFS, letting them know "who AFS is" and "what's in it for them," and organizing an historic annual meeting with regards to the number of concurrent technical sessions in addition to a highlighted symposium. At the Western Division level, I have chaired sessions and served as Co-Program Committee Chair for the 2003 annual

meeting in San Diego, CA, and at the Parent Society level, I served as Co-Program Committee Chair for the 2001 annual meeting in Phoenix, AZ. Currently, I serve on the Western Division's Western Native Fishes Committee and am Co-Symposium Chair for the Western Native Fishes Symposium scheduled for the 2004 annual meeting in Salt Lake City, UT.

In thinking about my vision for the future and what I would like to help the Division accomplish if elected Vice-President, I recalled a book I had recently read that compared and contrasted leadership styles and techniques of the nation's top managers. The book states that "great leaders focus the majority of their effort building upon strengths." If you have been a member of the Western Division for even a short period of time, you know that the Division is a strong leader in the American Fisheries Society and in the advocacy of the numerous issues facing our aquatic resources. The strengths of our Division can be seen in the standing and *Ad Hoc* committees created to address key aquatic resource issues, the quality of our annual meetings and continuing education courses offered at those meetings, the improved, effective, and regular communication within the Division via monthly conference calls and timely newsletters, and at the Chapter level, as witnessed by Outstanding Chapter of the Year Award recipients, the willingness of Chapters to co-host Division or Society annual meetings, and the submission of letters of local or regional environmental concern to the Division's EXCOM. Obviously this is not a comprehensive list, but impressive nonetheless. If elected Vice-President, I can assure you that I will work diligently with Division and Chapter EXCOM's to ensure that our strengths remain our strengths and that the Western Division remains a strong leader in the Society and, for the advocacy of key aquatic resource issues in western North America.

In addition to remaining strong, I would like to see the Western Division and the AFS International Fisheries Section continue to work with our Mexican colleagues in establishing a Mexican AFS chapter or chapters. Many Western Division resources have been devoted to this effort in the past, which came to fruition at the 2003 annual meeting in San Diego, CA. However, our job is not complete. President-elect Lynn Starnes envisioned a western fishes "Summit" involving many groups, in an effort to concentrate collective efforts on the recovery of western species. With a Western Native Fishes Symposium and Proceedings highlighting the current distribution and status of western native fishes being organized for 2004, a "Summit" seems like the next logical step. I would like to work with EXCOM to ensure that this "Summit" becomes a reality. Recognizing that the Chapters are the backbone of the Division, I would like to work with each Chapter EXCOM to see if there are ways the Division EXCOM can assist in strengthening the Chapter role in meeting the goals outlined in the Division's Annual Program of Work and thus, the Strategic Plan of the American Fisheries Society. My ultimate goal is to see "Outstanding Chapter of the Year" applications from all Chapters each and every year.

I am honored to have been nominated for Vice-President of the Western Division and truly appreciate this opportunity. Having served on the EXCOM of the AZ/NM Chapter for 3 years, I am aware of the effort and time commitment this position requires. I believe that my past involvements and accomplishments in AFS at all levels demonstrates my ability to "get the job done." If elected, I will do my best to ensure that the Western Division remains strong, its members are served, and aquatic resources have a voice!

Bob Hughes

Professional Background: I received an A.B. (Biology & Psychology, 1967) and an M.Sc. (Resource Planning & Conservation, 1973), both from the University of Michigan. In 1979, I obtained my Ph.D. (Fisheries) from Oregon State University. From 1977-1980 I was an assistant professor at Western Michigan University, teaching stream ecology and field biology and conducting research. I was employed by the University of Illinois and the U.S. EPA for one year each. Since 1982, I have worked as a regional aquatic ecologist for the U.S. EPA lab's contractor in Corvallis, OR. My research has focused on developing and testing field survey methods and bioindicators, using reference streams and ecoregions to help estimate potential conditions in fish assemblages, and conducting bioassessments. During that time, I studied streams and rivers in the 12 conterminous western United States, and Canadian & New England lakes. I am a Courtesy Associate Professor of Fisheries at Oregon State University, and served as a Technical Advisor on dissolved oxygen and biocriteria for the Oregon Department of Environmental Quality. I have been sponsored to present my research results on fish assemblages in Sweden, Brazil, Poland, and France, and have 76 peer-reviewed publications. I am North American Benthological Society Science & Policy Committee Co-chair (2002-2004) and was Conservation & Environmental Issues Student Award Chair (2002-2003).

AFS Experience: I served as Oregon Chapter President-Elect (1993-1994), President (1994-1995), Past-President (1995-1996), and Legislative Committee Co-chair (1995-1996). My major accomplishments in the Oregon Chapter included developing a sound budget while employing part-time legislative and executive assistants, rewriting executive committee and annual meeting handbooks, completing a chapter ethics statement, and introducing a unanimously-passed resolution favoring the breaching of four dams on the lower Snake River. I was Program Chair for the 1996 Western Division annual meeting in Eugene, OR. My focus at that meeting was documenting the status and trends in biodiversity of western fishes. At the national level, I was Nominating Committee Chair (1999); Water Quality Section President-Elect (1997-1999), President (1999-2001), Past-President & Newsletter Editor (2001-2004); Governing Board

(continued on page 11)

WDAFS Candidate Profiles - (continued)

Member (1999-2001); and Associate Editor of the North American Journal of Fisheries Management (2001-2004). My major accomplishments in the Water Quality Section were updating the bylaws, helping develop a budget, beginning electronic mailing of the Section newsletter, and helping convince the Governing Board to initiate a fund for attendance by international members at our annual meetings. I have chaired six symposia at national meetings and given 19 presentations at local, division, or national meetings.

AFS Western Division Goals: I endorse improved communication among Division Officers, Committee Chairs, and Chapter Presidents through use of periodic conference calls, a mid-year meeting, and emails. I advocate a Division position on issues affecting multiple states and provinces, including reviews of such proposed policies as the AFS dam removal position statement, the USEPA's proposed rule removing non-navigable waters from Clean Water Act protections, federal water project subsidies, Endangered Species Act amendments, and marine and anadromous fisheries management. I support increased communication with Division members through a web page, electronic mailing of The Tributary, and informative and less-expensive annual meetings. Also, I favor greater linkages with other aquatic scientists, fishery students, non-USA members, and young fishery professionals by subsidizing selected presentations at our annual meetings.

Nominating Representative

Pete Bisson

Professional Background: I'm a longtime AFS member and leader of an aquatic research team at the Forest Service's Pacific Northwest Research Station laboratory in Olympia, Washington. I received a B.A. in environmental biology from the University of California at Santa Barbara in 1967, and M.S. and Ph.D. in fisheries from Oregon State University in 1969 and 1975, respectively. After graduating I worked as an aquatic biologist for the Weyerhaeuser Company for 21 years, and in 1995 I joined the Forest Service. My studies have included fish populations in Pacific Northwest streams, stream habitats and food webs, riparian zone management, and a variety of conservation issues related to aquatic ecosystems. I hold affiliate faculty appointments at the University of Washington, Oregon State University, and the University of Idaho, and have served on two National Research Council committees: one on Pacific salmon and the other on watershed management. From 1997 to 1998 I had the honor of serving as president of the Western Division of the American Fisheries Society. I'm currently vice-chair of the Independent Scientific Advisory Board for the Columbia River Basin, a committee of scientists that provides oversight for one of the world's most extensive (and expensive) aquatic restoration programs.

AFS Experience: Prior to my term as WDAFS president I served as president of the North Pacific International Chapter from 1991 to 1992. I've also been an Associate Editor of the *Transactions* and have co-edited a book on sea-run cutthroat trout, published by the Oregon Chapter, and more recently a book on river restoration published by AFS. I've chaired several North Pacific International Chapter and Western Division committees, and have served on six AFS parent society committees in addition to being a liaison between AFS and the Society for Range Management. I've participated in teaching several AFS-sponsored continuing-education workshops, mostly related to stream habitat. I've given 40 papers at chapter, division and parent society AFS meetings and have organized 11 technical sessions. Currently, I'm one of the AFS representatives on the Programme Committee for the 4th World Fisheries Congress. I've always enjoyed my interactions with other AFS members.

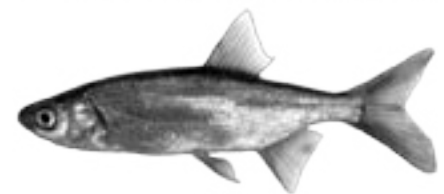
E. Eric Knudsen

I am pleased to be nominated for the position of Western Division Nominating Representative. I have been a member of AFS since 1972. Over the years, I have been involved in a number of AFS service positions and activities. In Louisiana, I served as Chapter Secretary/Treasurer/Newsletter Editor for two years and organized and chaired the Chapter annual meeting in 1984. While working in Olympia, Washington for the US Fish and Wildlife Service, I became involved in North Pacific International Chapter activities, serving on the Environmental Concerns Committee and organizing several symposia for annual meetings. During the past nine years in Alaska, I have been an active member of the Alaska Chapter, chairing the Chapter's Environmental Concerns Committee for two years and organizing sessions and workshops for annual meetings. At the Western Division level, I have organized and chaired meeting sessions, and served on the Program Committee for the 1998 annual meeting in Anchorage. In 1999, I was elected Vice President of WDAFS and served on the Executive Committee for four years. During my WDAFS President-Elect year, I was co-chair of the Program Committee when the Division co-convened its annual meeting with the parent Society for the Phoenix meeting. I remain active in the Division, and presently serve as Co-chair of the Mexican Fisheries Committee. At the parent

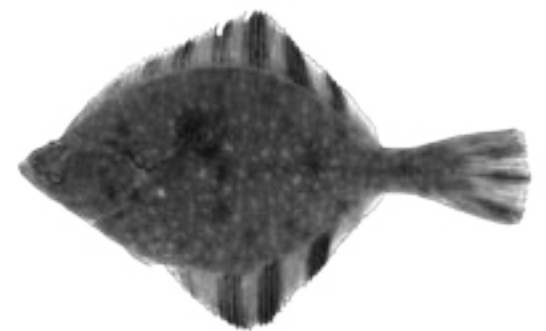
AFS level, I served for two years on the Governing Board. I am currently a member of the Time and Place and Best Science committees and chair the AFS 2005 annual meeting Program Committee. One of the finest features of AFS service is getting to know numerous fisheries professionals from throughout North America. My depth of experience in AFS activities and professional connections in the Society will allow me to fully represent the Division in recommending individuals to be nominated for the Society's highest office.

Support the Western Division and Vote Today with the Enclosed Ballot!

Photos by Rene Reyes



Hitch



Starry Flounder



Pacific Staghorn Sculpin



Sacramento Pikeminnow

Mentor a Junior Fisheries Biologist

If you would like to work with a young biologist this summer, consider the Hutton Junior Fisheries Biology Program, sponsored by the AFS. This mentoring program for high school students is designed to stimulate interest in a career in fisheries science among groups underrepresented in the fisheries profession. Students are matched with a professional mentor for a hands-on experience in a marine or freshwater setting, and are awarded a \$3000 scholarship. More details are available from the AFS.



Northwest Marine Technology, Inc. (www.nmt.us) commends the AFS for this program. We look forward to seeing you at the 2004 Western Division Meeting in Salt Lake City.

**Western Division American Fisheries Society
and The Whirling Disease Foundation Joint Annual Meeting
February 29 – March 4, 2004
Little America Hotel, Salt Lake City, Utah
http://www.wdafs.org/meet/2004/meet_2004.htm**

PERSONAL INFORMATION

First Name: _____ Last Name: _____
 Name (as it should appear on name badge): _____
 Affiliation (as it should appear on name badge): _____
 Address: _____
 City: _____ State: _____ Zip Code: _____
 E-Mail Address: _____
 Daytime Phone: _____ AFS Member #: _____

REGISTRATION (Early registration rates apply to those received by January 30, 2004)

	EARLY REGISTRATION	LATE REGISTRATION
Member (AFS Parent Society or WD Foundation)	\$ 265.00	\$ 365.00
Non-Member (Includes 1-year membership to AFS)	\$ 350.00	\$ 450.00
1-Day (Circle One) MON TUE WED THU (Includes all social events held on that day)	\$ 175.00	\$ 175.00
Student Member (AFS Parent Society or WD Foundation)	\$ 120.00	\$ 120.00
Student Non-Member (Includes 1-year membership to AFS)	\$ 160.00	\$ 160.00
Guest (Includes evening receptions and banquet)	\$ 50.00	\$ 50.00
Retired	\$ 120.00	\$ 120.00
Bonneville Chapter Business Breakfast	\$ 5.00	---
Colorado-Wyoming Chapter Business Breakfast	\$ 5.00	---

- The Western Division Business Meeting Luncheon and Banquet are included in all registration fees.

REGISTRATION SUB-TOTAL \$ _____

CONTINUING EDUCATION

1. "Point of Order"- Skills for Surviving General Robert's Rules

Instructor: Joe Margraf **Time:** 3 hrs (2:00-5:00 pm) **Date:** Sunday, February 29, 2004

Fee: Free \$ FREE

2. AQUATIC INVASIVE SPECIES THREATS TO WESTERN WATERS

Instructor: Bob Pitman **Time:** 8 hrs or full day **Date:** Thursday, March 4, 2004

Fee: \$35 Students, \$50 AFS Parent Society Member, \$75 AFS Nonmember \$ _____

3. PREPARATION AND REVIEW OF PROFESSIONAL MANUSCRIPTS

Instructor: Dave Bennett **Time:** 8 hrs or full day **Date:** Thursday, March 4, 2004

Fee: \$35 Students, \$50 AFS Parent Society Member, \$75 AFS Nonmember \$ _____

4. POPULATION VIABILITY ANALYSIS

Instructor: Mary Conner **Time:** 8 hrs or full day **Date:** Thursday, March 4, 2004

Fee: \$35 Students, \$50 AFS Parent Society Member, \$75 AFS Nonmember \$ _____

5. GENETICS AND BROODSTOCK MANAGEMENT: A WORKSHOP FOR NON-GENETICISTS IN AQUACULTURE AND FISHERIES MANAGEMENT

This course requires a minimum enrollment of 30 participants by February 15, 2004 or it will be cancelled, in which case the registration fee will be refunded or may be applied to another March 4 course.

Instructor: Dr. Robb Leary **Time:** 8 hrs or full day **Date:** Thursday, March 4, 2004

Fee: \$35 Students, \$50 Non-Students \$ _____

Can you bring a laptop computer with at least Windows 95 and Excel? Yes No

CONTINUING EDUCATION SUBTOTAL \$ _____

REGISTRATION SUBTOTAL \$ _____

TOTAL PAYMENT \$ _____

How To Register

Two Ways to Register:

1. Paying by credit card: (Easiest and Best way!)
Go online to the Western Division AFS Annual meeting site at:

www.wdafs.org/meet/2004/meet_2004.htm

click on the "Registration" button and complete the registration form. You will receive an e-mail confirmation letting you know your registration has been completed as well as an electronic receipt.

2. Paying by check:

Complete the attached form and mail to
 Steve Wolff
 WAFS 2004
 Wyoming Game and Fish Department
 5400 Bishop Blvd.
 Cheyenne, WY 82006

If you have any questions about registration or need to FAX a registration, please call Steve Wolff at (307) 777-4673 or Sheila Garl at (307) 777-4562.

**For Local Tours and Activities
Registration Form, see page 5.**

**WDAFS Web Site
Redesigned!**

The Western Division has a new look, a redesigned web site!

Check it out at:

<http://www.wdafs.org>

As we strive to excel in information transfer and outreach, our web site is critical in presenting the view of the Western Division of the American Fisheries Society in a timely manner.

Our next step will be to have our newsletters be distributed by the web only, thus saving the Division time and money.

The screenshot shows the WDAFS website interface. At the top right is the logo for the Western Division of the American Fisheries Society. Below the logo is a navigation menu with tabs for Home, About Us, Registration, and News. The main content area features a mission statement: "The mission of the American Fisheries Society is to improve the conservation and sustainability of fishery resources and aquatic ecosystems by advancing fisheries and aquatic science and promoting the development of fisheries professionals." Below this is an "Announcements" section with several bullet points regarding registration deadlines and meeting details. At the bottom right of the screenshot is a small image of a fish.